

510 Montauk Hwy.

West Islip, NY

Office for Lease



Building Size:

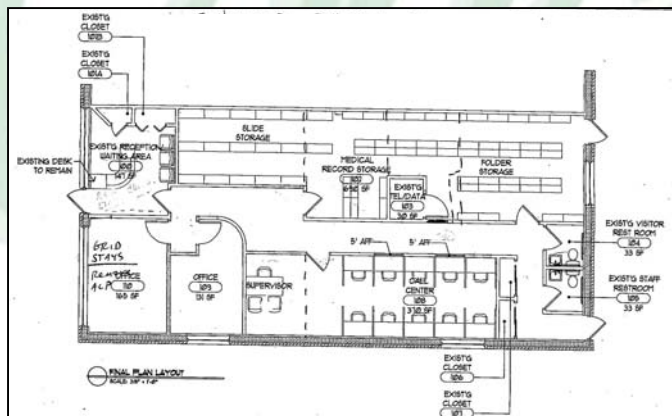
Approx. 11,000 sf

Available Suite Size:

2,200 sf

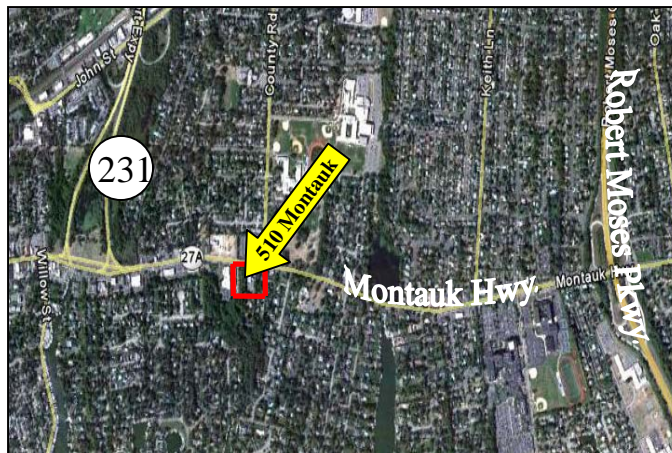
Lease Price:

\$25.00 psf plus utilities



Comments

- Great for any professional use
- Suite consists of 3 offices, 2 private bathrooms, bullpen, and storage area
- Suite has 3 private entrances with direct access to parking lot
- Immediate access to Rte 231 and the Robert Moses Parkway
- Available immediately
- Flexible lease terms



For Additional Information Contact
Exclusive Broker:

Dan Flynn

516-433-9000 ext. 1516

DanFlynn@Concorde-Li.com

Concorde Real Estate Company, Inc.

9 Gerhard Rd.

Plainview, NY 11803

Tel: 516-433-9000

www.Concorde-Li.com



The information contained herein was obtained from sources we believe to be reliable. But please take notice that we are not responsible for, do not attest to, or invite your reliance upon the accuracy of this information. All information is submitted subject to errors, omissions, changes, withdrawal without notice, and any special listing conditions of Owner.