

# 585 Corporate Center

585 Stewart Ave. Garden City, NY

For Lease

## **MAKING DEALS!!!**

- **SUITES AVAILABLE FROM 600 SF TO 12,000 SF**
- **ALL SUITES HAVE A TREMENDOUS WINDOW RATIO**

**CALL FOR UPDATED PRICING!!!**



- Excellent parking includes 100 covered spaces
- Conveniently located at the Meadowbrook Pkwy.
- Generous workletter allowance
- Flexible lease terms
- On site café / restaurant
- On site management
- Immediate occupancy

For Additional Information Contact  
Exclusive Brokers:

### **Joe Lopresti**

516-433-9000 ext. 1515

[JoeLopresti@Concorde-Li.com](mailto:JoeLopresti@Concorde-Li.com)

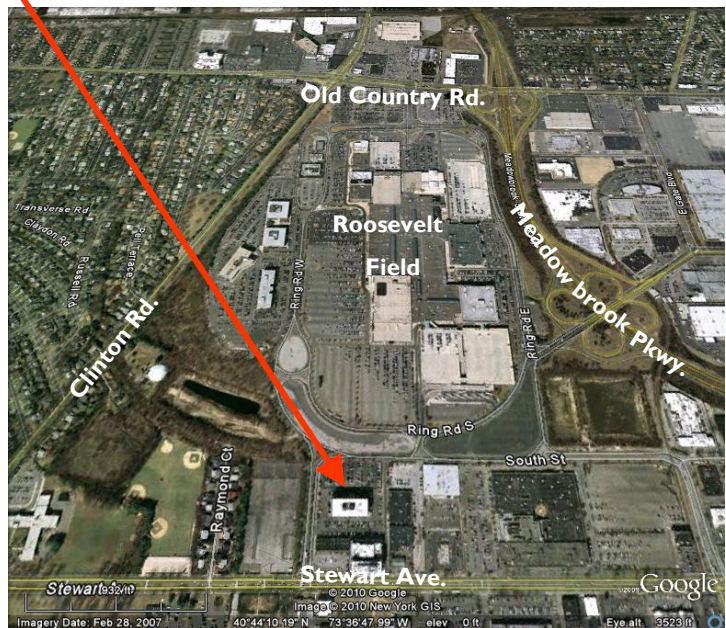
### **Dan Flynn**

516-433-9000 ext. 1516

[DanFlynn@Concorde-Li.com](mailto:DanFlynn@Concorde-Li.com)



Concorde Real Estate Company, Inc.  
9 Gerhard Rd.  
Plainview, NY 11803  
Tel: 516-433-9000  
[www.Concorde-Li.com](http://www.Concorde-Li.com)



*The information contained herein was obtained from sources we believe to be reliable. But please take notice that we are not responsible for, do not attest to, or invite your reliance upon the accuracy of this information. All information is submitted subject to errors, omissions, changes, withdrawal without notice, and any special listing conditions of Owner.*